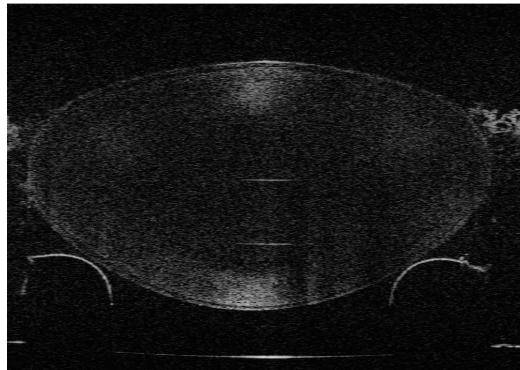




---

## Optics of the in vitro crystalline lens

**Fabrice Manns, Ph.D.**  
**Bascom Palmer Eye Institute**



In-vitro human crystalline lens

### **ABSTRACT**

---

The crystalline lens of the eye is a complex and dynamic optical system with aspheric surfaces and a gradient of refractive index that change with age and accommodation. The presentation will describe in vitro measurements of the human lens shape and optical properties and their changes with age. The implications for the age-related loss of accommodation leading to presbiopia will be discussed with a special emphasis on the role of the index gradient.

---

**Miércoles, 4 de Marzo de 2009**

**12:30 horas**

**Sala de Conferencias. Instituto de Optica (CSIC) .  
C/ Serrano 121, 28006 Madrid**

---

**Información:**

Susana Marcos

Instituto de Optica, CSIC

Tel: 915616800 x2313; email: [susana@io.cfmac.csic.es](mailto:susana@io.cfmac.csic.es)